

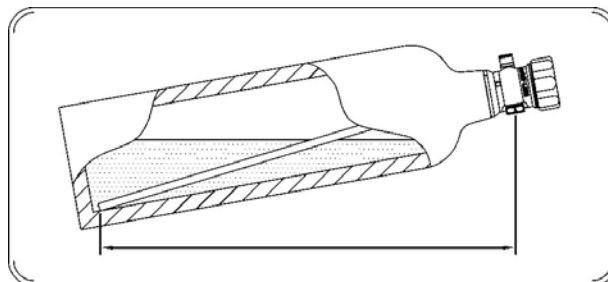
Cylinder Orientation

The orientation of the cylinder is an important consideration when installing your system. To have the most efficient use of the contents and reduce the chance of surging, choose the correct orientation.

Wherever you install your cylinder ensure the dip-tube remains in the liquid at all times. On standard cylinders this will mean keeping the outlet of the valve facing down and raised with relation to the base of the cylinder (See Fig. 4A).Where the cylinder is mounted transversely acceleration will cause the liquid to rise up the rear internals of the cylinder. To compensate rotate the cylinder up to 45 so the outlet/dip-tube is facing towards the rear.

Note: All standard cylinders cannot be fitted upside down or with the valve facing the rear. If you should wish to mount the cylinder in this way please contact your local agent or our technical team for advice.

Fig. 4A



Cylinder Bracket Base

(Supplied assembled for most applications)

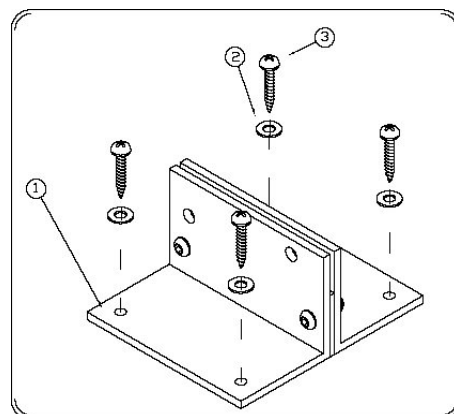
Mounting

- Pick a cylinder position allowing access to the valve and pipe connections.
- Ensure that the cylinder is easily removable from this location.
- Ensure the base/cylinder orientation is correct for the location.
- Lay the base into position and mark through the mounting holes.
- Drill 4 x 3mm holes and fasten with the screws supplied.

! Important Advice !

- For safety mount the bracket directly to the metalwork of the chassis. Where this is not possible use a suitable thick section of boarding (10mm +) to fasten into and make this a secure board.
- When mounting to the vehicles chassis always asses what is beneath the location. Many rear installations are close to the vehicles petrol tank.
- When drilling holes in eth chassis only drill through the metal and no further, test with a suitable rod that there is sufficient depth for the mounting screws.

Fig. 4B



Parts List

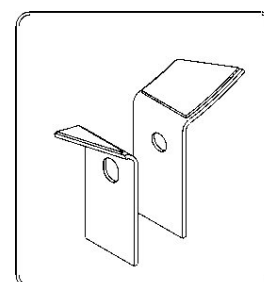
- 1 – 5/11Lb Bracket Base (1)
- 2 – Mounting Washers (4)
- 3 – Mounting Screw (4)

Cylinder Mounting Bar and Straps Assembly

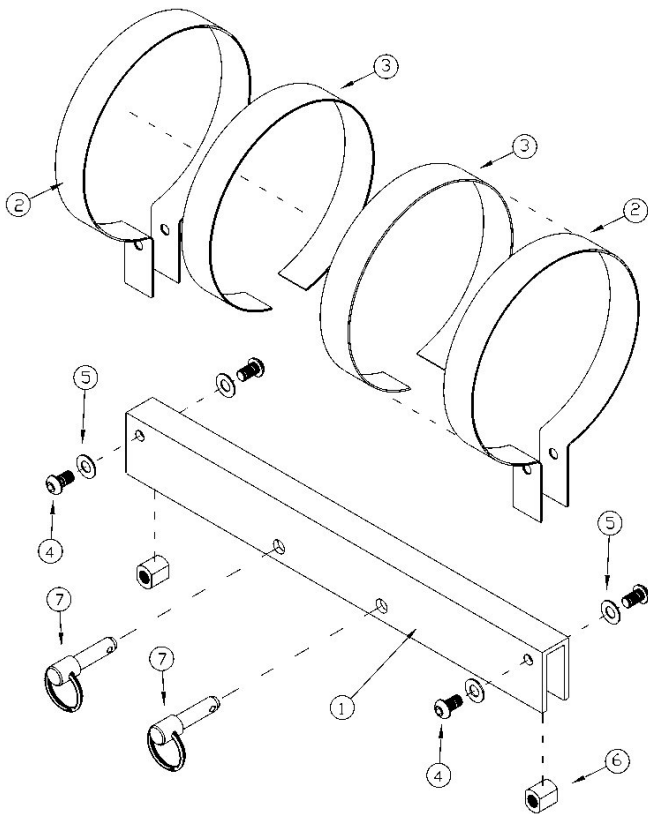
(See Exploded Diagrams, Page 4/02)

- Cut sections of the supplied protection strip to approx. 345mm (5lb x 2) or 465mm (11lb x 4) and affix to the straps.
- Using the mounting bolts and threaded spacers fasten each SS strap to one side of the mounting bar. (Do NOT mount using the slotted holes in the bracket. See Fig. 4C)
- If the cylinder sticker is desired affix this now in relation to the straps and rotation.
- Place the cylinder through the open straps, position it with the valve facing down and with the base towards the identification mark on the end of the mounting bar. (Unless non-standard cylinder orientation, See Page 4 / 03)
- Hold each strap in the clamped position and using the SS bolts retain the open end by a few turns.
- Slacken the original bolts to match then gradually tighten each bolt evenly to pull the strap ends together. Stop when each strap end is flat with the mounting bar. (Periodically check the strap is straight while tightening)

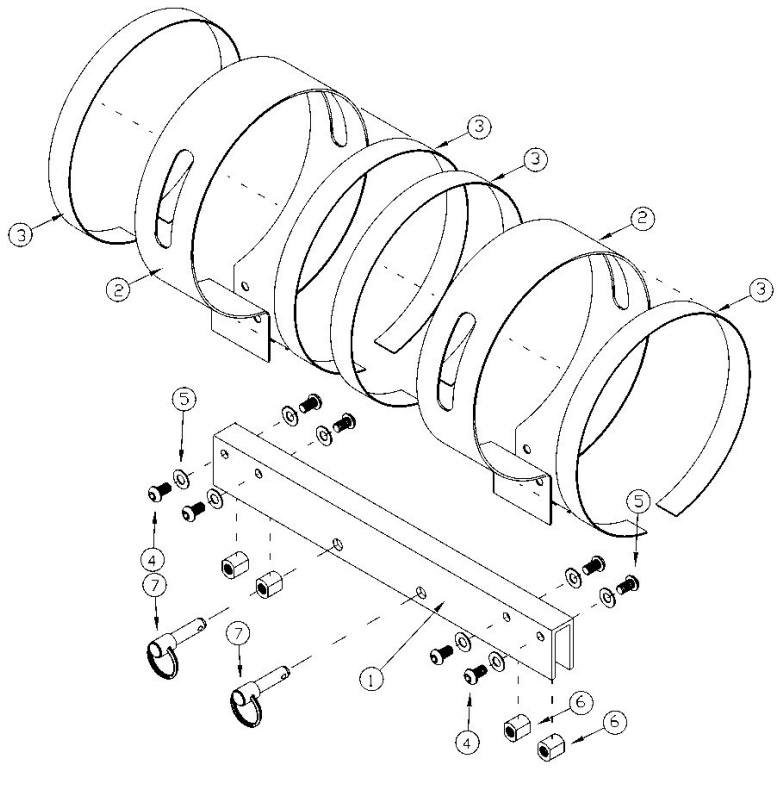
Fig. 4C



5Lb Cylinder Mounting Bar and Straps



11Lb Cylinder Mounting Bar and Straps



(Supplied assembled for some applications)

Parts List

- 1 – 5Lb Cylinder Mounting Bar (1)(1)
- 2 – 5lb SS Strap (2)(2)
- 3 – Self Adhesive Protection Strip (2)(4)
- 4 – SS Bolt 10mm (4)(8)

- 5 – SS Washer (4)(8)
- 6 – Threaded Spacer (2)(4)
- 7 – Quick Release Pin (2)(2)

How to Use the Bracket?

- To mount the cylinder inc. bracket lower the rear of the cylinder onto the base first. The cylinder will normally sit approximately in line with the lower quick release pin hole.
- Install the lower quick release pin, lift the high end of the cylinder until the second pin slots into place.

Note: When mounting the cylinder to the base some tolerances might mean a tighter fit on some applications. In these cases a small amount of grease would be beneficial on the inside mating surfaces of the mounting bar.

